



Instruction Manual of nile air tools — Original instructions —

Use

This tool is suitable for cutting work, such as cloth, paper, thin rubber and vinyl.

※EN ISO 11148-2:2011

Product name	nile air tools
Model No.	GS01 (MULTI-PURPOSE SCISSORS)

Attention on safe of this product

- In order to prevent accidents, such as an injury, be sure to follow "attention on safe" expressed below.
- Before use — this "attention on safe" — use it correctly according to directions after often reading all.
- Be sure to keep it to the place where those who use are seen always after reading.



WARNING

<Before work > Intercept an air source of supply at any cost at the time of air hose desorption.

①Do not use any power source except an air compressor.

- The tool is designed to operate on compressed air.

Use only air compressed by air compressors. Do not use any other power source ,
such as high pressure gas of oxygen , acetylene , propane , etc. which will cause explosive hazard .

②Use it for the work which suited the use.

- This tool is suitable for cutting work, such as cloth, paper, thin rubber and vinyl.
- Do not use it in addition to the specified use.

If cutting beyond capability are carried out, it becomes a cause of breakage of a blade,
a breakage part should fly, and since it is dangerous, never make it absolute.

③Please do not bring a child close.

- Do not let me touch an multi purpose scissors and an air hose except a worker. It becomes a cause of an injury.
- Do not bring close to a workplace except a worker. It becomes a cause of an injury.

④Keep work area clean.

- The untidy place and working table cause an accident.
- Make a workplace bright enough. A dark workplace causes an accident.

⑤Dress properly . Too large dress and long hair cause an accident.

- ⑥In order to protect an ear from the exhaust sound and exhaust air ,
always wear hearing protective equipment.

⑦Use protective equipment.

- Wear a protective glove.
- Use an eye shield.

⑧Wear protectors, such as a helmet, safety shoes, and a protection-against-dust mask, according to work environment.

⑨Carry out checking the following items before connecting an air hose.

- The screws of the blade attachment , the main part connection part, and the air piping part don't be loose.
- Be damaged or there need to be no detached parts.
- There need to be no parts in which rust does not operate normally owing to.
Use in the state of being abnormal is forbidden strictly. It becomes an accident and a cause of an injury.
Request repair from the purchased store or Muromoto at the time of an abrupt increase.

⑩Be careful of the following thing when you connect an air hose.

- A hand cannot be touched at a lever.
- The connector to use, please prepare a metal connector.
Please refer to PNEUMATIC CIRCUIT DIAGRAM in page 7.

⑪Connect an air hose and carry out the next check, before attaching blade.

- There should be neither an air leak nor unusual sound.
Use in the state of being abnormal is forbidden strictly. It becomes an accident and a cause of an injury.
Request repair from the purchased store or Muromoto at the time of an abrupt increase.

⑫Attach blade certainly according to an operation manual.

- If not certain, it will separate and will become a cause of an injury.

⑬Use appointed accessories and attachment.

- Use neither the accessories of the specification written in this operation manual and our catalog,
nor things other than an attachment. It becomes an accident and a cause of an injury.

⑭Do not use it, when blade have modification and a crack.

<Under work > Intercept an air source of supply at any cost at the time of air hose desorption.

①Use the appointed air pressure power.

•The use air pressure power range of this machine is 0.4 – 0.6MPa. Use it within the limits of this.
If it is used by the air pressure power beyond 0.6MPa, there will be a burst of the body and fear of damage and it will become a cause of an injury.

②During use, do not turn tip parts, such as blade, to an operator or other persons, or bring neither a hand nor a face close.

•It becomes a cause of an injury.

③Do not use it in a place with an inflammable liquid or gas.

•Do not use this machine in a place with the existing inflammable liquid or gas, such as thinner, gasoline, a paint, and gas. Suction compression is carried out together with air, there is fear of explosion or a fire, and it becomes a cause of an accident. It is not designed in the purpose of use in explosive environment.

④Do not touch blade other than the time of blade exchange and trouble generating.

•Since blade are operating at high speed, do not touch blade
or each multi purpose scissors should not bring fingers on the outskirts close

**⑤In the following case, please remove an air hose and extract compressed air.
(There is a possibility that the stored air may cause danger.)**

•It is after use at the case where it is not used, or the time of work discontinuation.

•In the cases of check, repair, adjustment, etc.

•When accessories, such as blade , are exchanged.

•When moving an multi purpose scissors and delivering by hand.

The multi purpose scissors operates accidentally and it becomes a cause of an injury.

⑥Do not let me desorb an air hose, where a finger is applied to a lever.

•The multi purpose scissors operates accidentally and it becomes a cause of an injury.

⑦A workpiece should work fixing firmly.

⑧Be careful of a surrounding person during work.

•Since cutting has a possibility that scraps etc. may hit in use, do not let an outsider enter within a 1-m radius.
It causes the injury.

•Be sure to confirm well that there are no people, and to use a fall prevention implement downward,
at the time of height work, to equip it with it.

It becomes a cause of an accident when this machine and material are dropped.

⑨In the work to a weak material, cause a harmful fragment and be careful.

•Be careful of working leaning the head etc. in the work which discharge of a facet etc. generates.

⑩Hold an multi purpose scissors certainly during use not to be rejected about.

•It will become a cause of an injury if it does not hold certainly.

⑪Do not work with an impossible posture.

•Always brace a step and maintain balance.

⑫Work being careful enough without being inattentive.

•When you use an multi purpose scissors, be careful of the handling method, the method of work, a surrounding situation,
enough, and work carefully.

•The untidy place causes an accident.

• Make the workplace bright enough. Work at a dark place becomes a cause of the accident.

•Do not use it, when you are tired.

⑬Perform the handling of a product carefully.

•Please never raise and lower,carrying the product by using the air hose.

•Please note that the air hose has the possibility of the whip.

⑭Keep in mind that this multi purpose scissors is not insulated for contact with the electric power source.

**⑮When you drop accidentally or you throw, check well that there are not breakage,
a crack, and modification in the body etc.**

•There is fear of a burst by internal compressed air, and it becomes a cause of an injury.

⑯During use, when the body is out of condition or you feel abnormalities,

stop use immediately and request repair from the store or the Muromoto ironworker of a purchase.

⑰Since there is vibration at the time of work, do not carry out prolonged continuous use.

<After work > Intercept an air source of supply at any cost at the time of air hose desorption.

①After work should remove an air hose at any cost.

**②Neglect the multi purpose scissors and the air-conditioner presser, hit to direct rays for
a long time, and come out.**

③An multi purpose scissors should repair carefully.

④When you do not use it, please keep it exactly.

⑤Do not remove parts or do not convert.

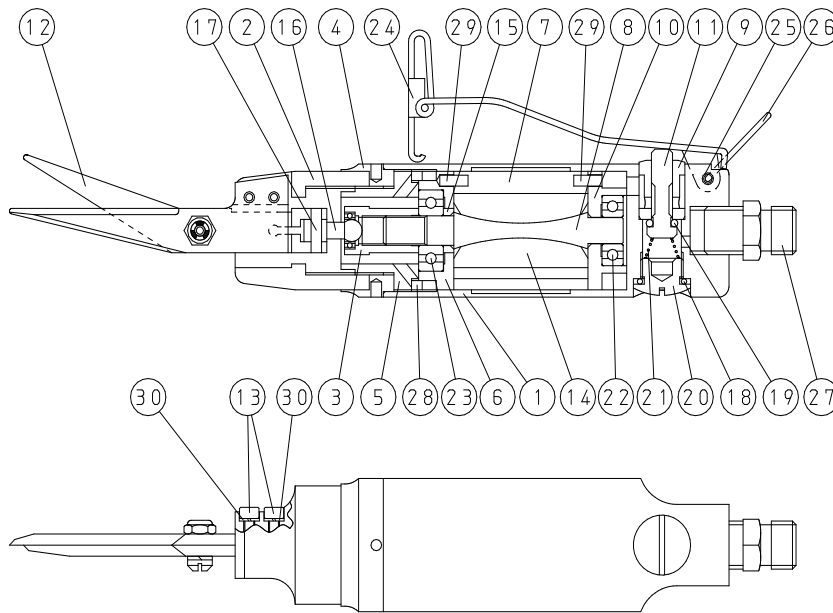
⑥Do not use anythings other than the recommended lubricous material.

⑦Request repair of the multi purpose scissors from the specialty store.

•Be sure to tell the store or Muromoto of a purchase repair.

If it fixes by itself, it will become an accident and a cause of an injury.

Machine construction (Parts list)



No.	DESCRIPTION
1	Body A
2	Body B
3	Cam
4	Connector
5	Screw connector
6	Front cap
7	Cylinder
8	Rotor B
9	Air valve
10	Rear cap
11	Air pin
12	Blade (selling separately) (with ⑩Free pin) (with ③D.C.)
13	Screw pin
14	Rotor vane
15	Rotor collar
18	O ring
19	O ring
20	Stop screw
21	Air pin holder spring
22	Rear cap bearing
23	Front cap bearing
24	Lever
25	Roll pin
26	Hanger
27	Nipple
28	Felt
29	Spring pin
30	Spring washer

Equipment supplied

①Screw pin = two

②Spring washer = two

③Hexagonal wrench 2.5mm = one



Product specification

Model No.	GS01		
Product name	nile air tools		
Product description	This tool is supplied with compressed air from the compressor will be the power source. It is held firmly by hand, you can work a continuous cutting blade attached on the tip of the tool. Such as thin rubber, vinyl, cloth and paper.		
Length(mm) Body only	140		
Weight(g) Body only	450		
Grip diameter(φ)	36φ		
Air consumption(ℓ/minute)	450		
Cutting the number of operation (rotations/minute) : no-load	12,000		
Maximum working pressure(Mpa)	0.6		
Noise emission values (based on ISO 15744)	A-weighted sound pressure level: dB(A)	A-weighted sound power level: dB(A)	Uncertainty K
	75.4	80.4	1.19
Vibration values (3 axes integrated: based on ISO 20643)	Vibration value: m/s ²		Uncertainty K
	0.9		0.25

Maintenance

Be sure to observe maintenance check.

If check is neglected, it will become an accident and a cause of failure.

Be sure to perform maintenance check before work and after work.

Remove an air hose at any cost in the case of check and care.

- Check whether there is neither dirt nor a crack in the appearance of a main part and an air hose.
- Check whether there is neither slack nor an air leak in each connection part, the screw, the nuts, main part, and air charging line part of a main part.

If it is used in the state where it loosened, the accident in the circumference of a worker and a workplace may be caused, and the lack of ability by main part breakage or air leak is caused.

- Check that the screw pin(13) is not loose.

- Carry out the check of operation of whether the multi purpose scissors is operating normally.

(Refer to the diagram of an operation manual of operation for normal operation.)

- Confirm whether to find abnormality in the air compressor.

(Refer to the operation manual of an air compressor for details.)

- The scupper method of an air compressor

If an inside is covered with water or oil, it will become a cause of failures, such as generating of rust.

Remove the oil or water from inside the air compressor by drain port, before and after using

Use the dry pure compressed air.

(Refer to the operation manual of an air compressor for details.)

- For piping and lubrication.

Be sure to use the air which let the air filter pass and which does not contain moisture.

Remove finely so that the garbage adhering to a nipple, etc. do not enter in a hose.

Time and continuous work before and after use , lubricate every hour.

※ Since shortly after refueling in the shape of the spray flying through the air and oil , no-load operation will be about 10 seconds it takes effect where there is no oil , let the oil circulate inside.

- Recommended lubricant

FC purpose (JIS) yanase seiyu hydraulic oil #10

R&O type ISOVG #10

Do not use anything other than the recommended lubricant.

- Use it by the appointed air pressure power.

It is maximum use air pressure power 0.6MPa of this machine.

Use it within the limits of this.

If it is used by the air pressure power beyond 0.6MPa, there will be a burst of the body and fear of damage and it will become a cause of an injury.

- Use the appointed accessories.

Please do not use anythings other than the accessories of the specification written in this operation manual and our catalog .

Since there is a possibility of becoming a cause of accidents, such as an injury.

- The use by an abnormal condition causes an injury and breakage of the body.

Request repair from the store or our company of a purchase in the case of abnormalities.

Neglect neither this machine nor an air compressor, hit to direct rays for a long time.

This machine should repair carefully.

When you do not use it, please keep it exactly.

Do not remove parts or do not convert.

I will carry out the product given unjust decomposition and reconstruction

the outside of the object of a guarantee.

No responsibility for the failure accompanying a user's own reconstruction act or fault is taken.

●Method lubrication

Install the lubricator through an air filter , or before and during continuous from the inlet hose nipple, be sure to lubricate the oil 6 drops every hour is recommended. Moreover , even after use and lubricate , keep working after about 30 seconds.



●How to install blade. (Shut off the air before work.)

- ①Insert sphere part of the tip of the free pin(16) straight in the cam(3).
(Refer to Fig.1, Fig.2)
When the hole screw pin(13) does not fit, free pin(16) in the state has entered cam(3), fit the hole by moving the blade portion of the blade drive.
- ②Once fully tighten the screw pin(13) and washer, loosen 1/8 turn.
(State temporarily = Move around a little.)
- ③Supply the air, be operated two or three times lightly press the lever.
After confirming the operation of the blade, stop the air supply source, tighten the screw pin(13)(two places)

Fig.1

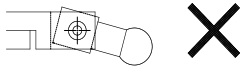
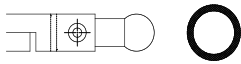
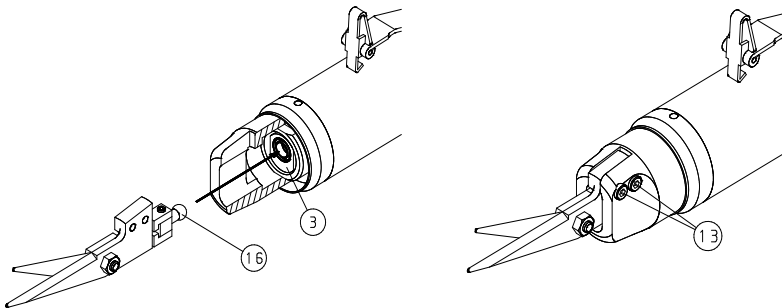
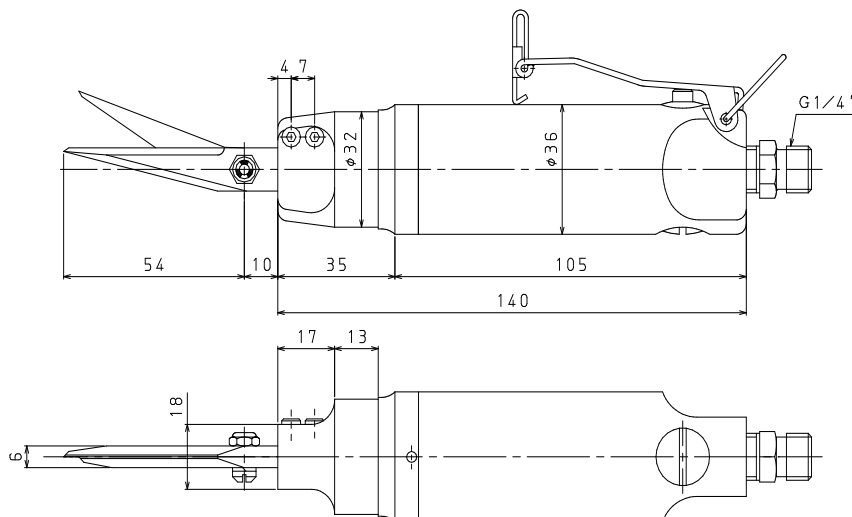


Fig.2

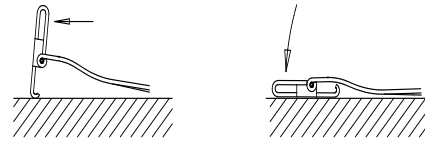


Appearance dimensional drawing

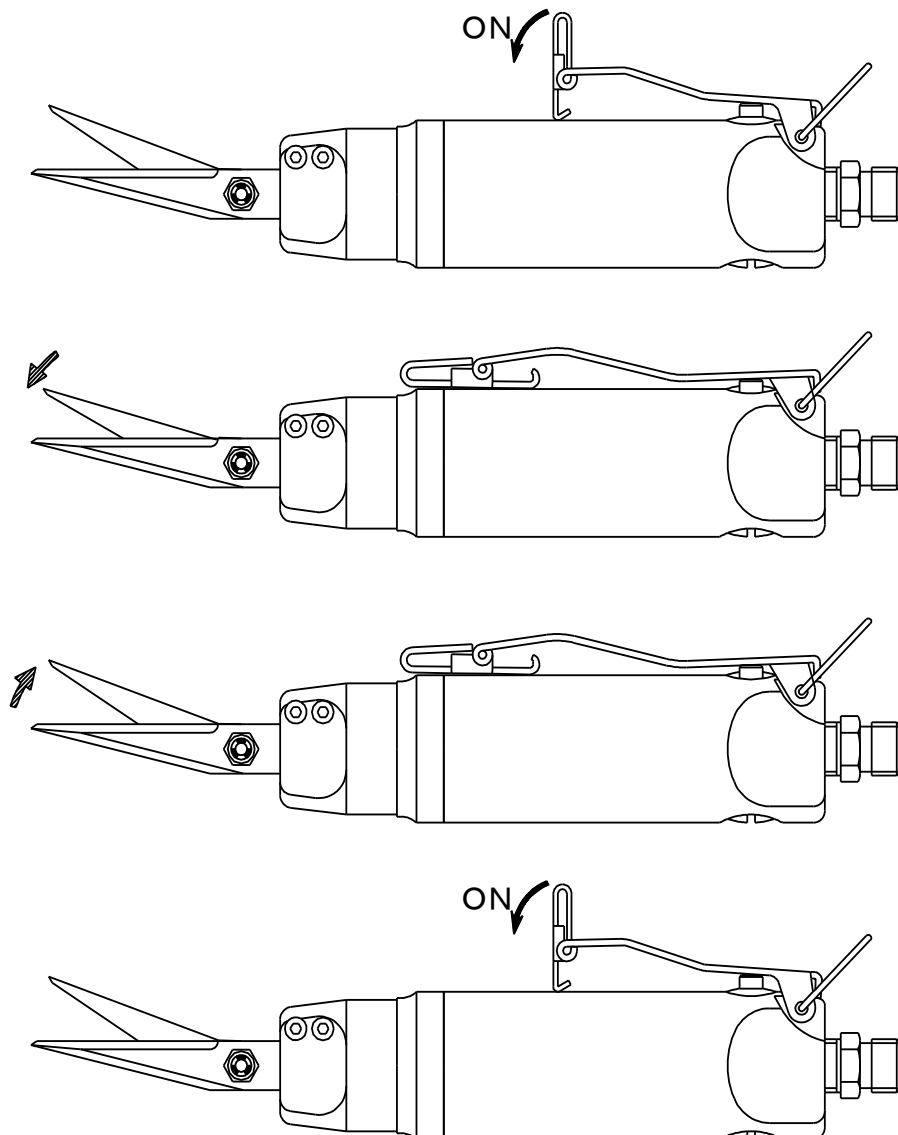


Directions for use

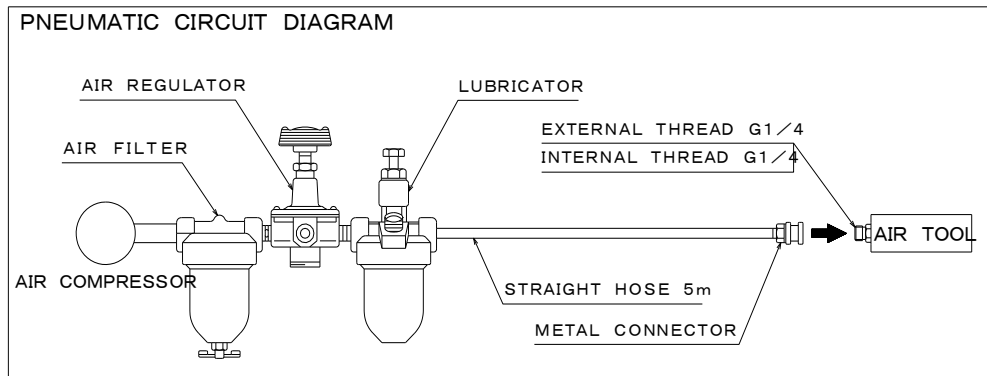
- When the cutting operations, operate the first blade with no load, start a cutting blade in one cutting bite them.
When operating after the blade is held to the object, too much initial torque, it may cause a failure or malfunction such as loss of the blade.
- When cutting, compared with an iron plate body, do not use tilt to the left.
On the structure, how to tilt to the right is easier to cut.
- When you stop working, after cutting the blade away from the one, return the lever.
You may be stuck in cutting one into the blade.
- After pressing the lever, when the air goes out without working, impact lightly to drive the cutting portion of blade.
(The degree of impact is light only. The shock is too strong, it can cause failure.)



● A diagram of operation



●The air supply method (circuit)



Warning label・Information label

●Warning label



: Read the instruction manual
before usage of air nipper

●Warning label attachment position



●Information label



• Air Pressure

• Caution !

• CE mark

●Information label attachment position



●Serial No.



●Model No.



At the time of repair

This product is manufactured in strict accuracy.

Request the store or the Muromoto TEKKO of a purchase without never fixing in person,
when it stops operating normally.

If it fixes by itself, it will become an accident and a cause of an injury.

In addition, when you are on the case where he wants parts, or handling and it is troubled, please ask.



Manufacturer.
Merry - Brand, Hand Tools & Nile - Brand, Pneumatic Tools
MUROMOTO TEKKO CO.,LTD.

8-1,1- CHOME, SHODAI-TAJIKA,HIRAKATA CITY
OSAKA 573-1132 JAPAN

TEL. +81-72-850-0091 FAX. +81-72-850-0082

<http://www.muromoto.co.jp> E-mail: mrt.info-f@muromoto.co.jp

EC DECLARATION OF CONFORMITY

We , the undersigned,

MANUFACTURER	MUROMOTO TEKKO CO . , LTD.
ADDRESS	8-1, 1-CHOME , SHODAI - TAJIKA , HIRAKATA CITY OSAKA 573-1132
COUNTRY	JAPAN
PHONE NUMBER	+81-72-850-0091
FAX NUMBER	+81-72-850-0082

under our sole responsibility , declare that the product

Product name	Nile Airtools
Model No.	GS01

complies with the provisions of following European Directives.

European Directive	Machinery Directive, 2006/42/EC

Applied Harmonized Standards:

Machinery Directive , 2006/42/EC	EN ISO 12100:2010
	EN ISO 11148-2:2011

The Technical documentation is kept at the following address.

Company in Europe	SAS AUTOMATION ROBOTERGREIFSYSTEME GMBH
Address	BANNWALDALLEE 60, D-76185, KARLSRUHE
Country	GERMANY
Phone number	+49 (0) 721 - 26306 - 10
FAX number	+ 49 (0) 721 - 26306 - 22